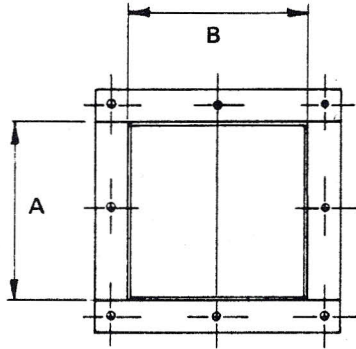
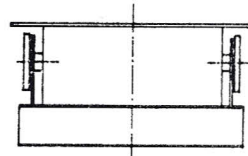
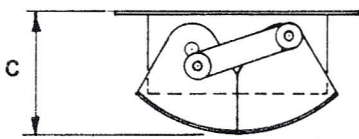


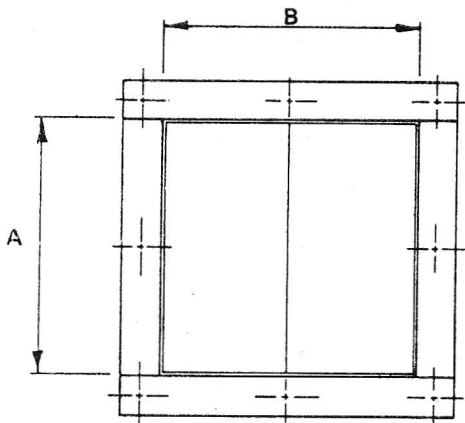
Clamgates



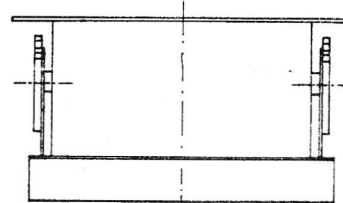
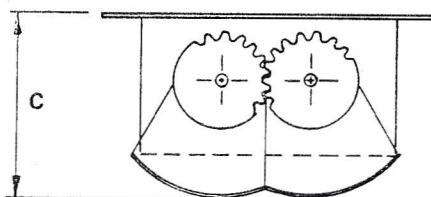
Size	Lever Type		
	A	B	C
12"	12"	12"	9"
14"	14"	14"	9-1/2"
15"	15"	15"	10-3/4"



Lever Type



Size	Gear Type		
	A	B	C
12"	12"	12"	9-3/4"
14"	14"	14"	10-3/4"
15"	15"	15"	11"
16"	16"	16"	11-3/8"
18"	18"	18"	13"
20"	20"	20"	14-1/4"
24"	24"	24"	17-3/4"
36"	36"	36"	26-1/2"



Gear Type

Note: Mounting holes are 9/16" diameter.