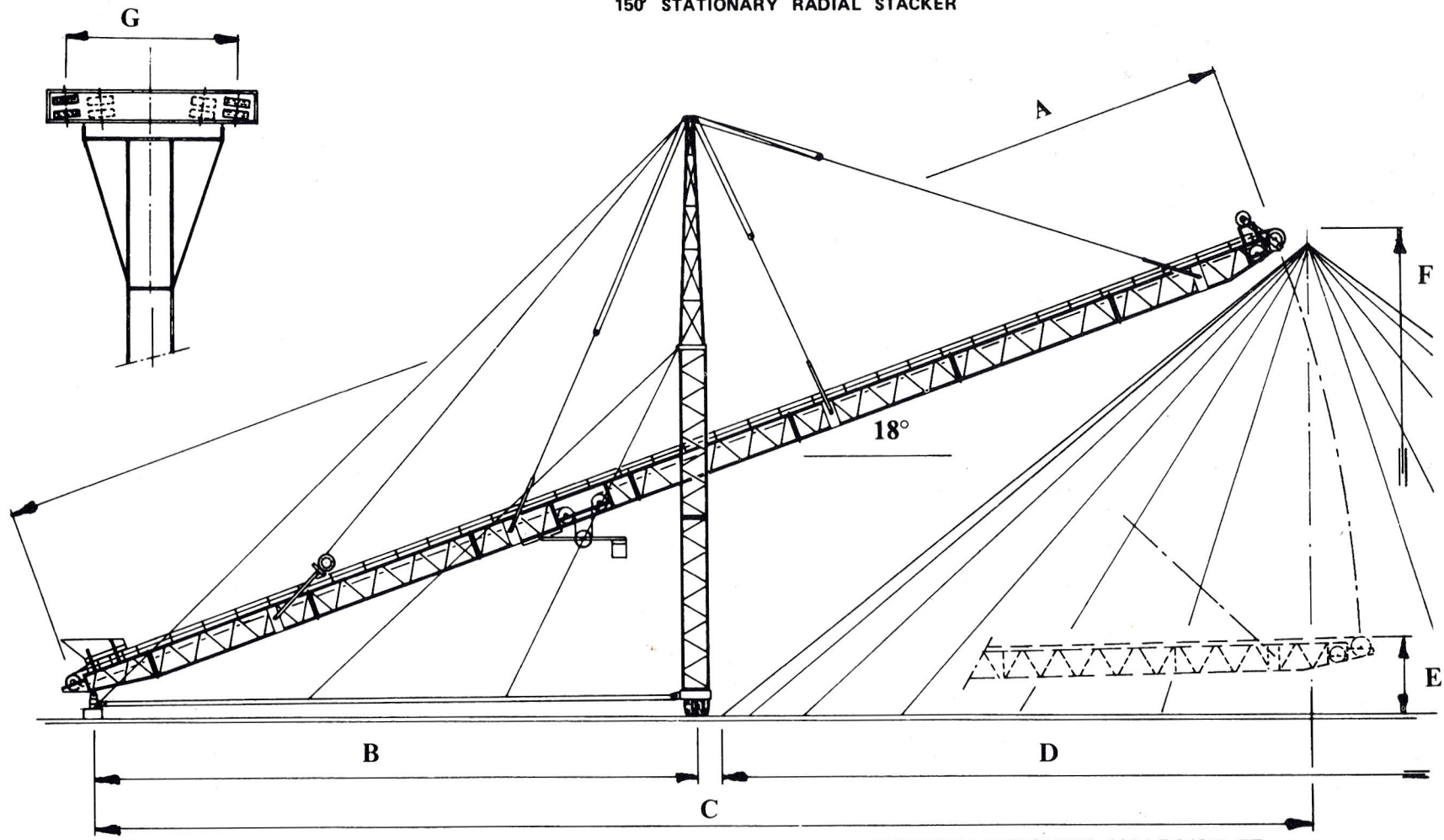


150' STATIONARY RADIAL STACKER



MATERIAL WEIGHING 100 LBS/CU. FT.

	A	B	C	D	E	F	G	VOL. CONICAL STOCK PILE		VOL. FOR 1° ARC.		180° CIRC. STOCKPILE VOL.	
IMP.	150'-0"	71'-0"	143'-0"	141'-0"	9'-6"	52'-0"	20'-0"	9633 YD3	13006 TONS	326 YD3	440 TONS	68256 YD3	92145 TONS
MM	45720	21640	43586	42976	2896	15849	6096	7360 M3	13214 TONS	249 M3	447 TONS	52184 M3	93624 TONS