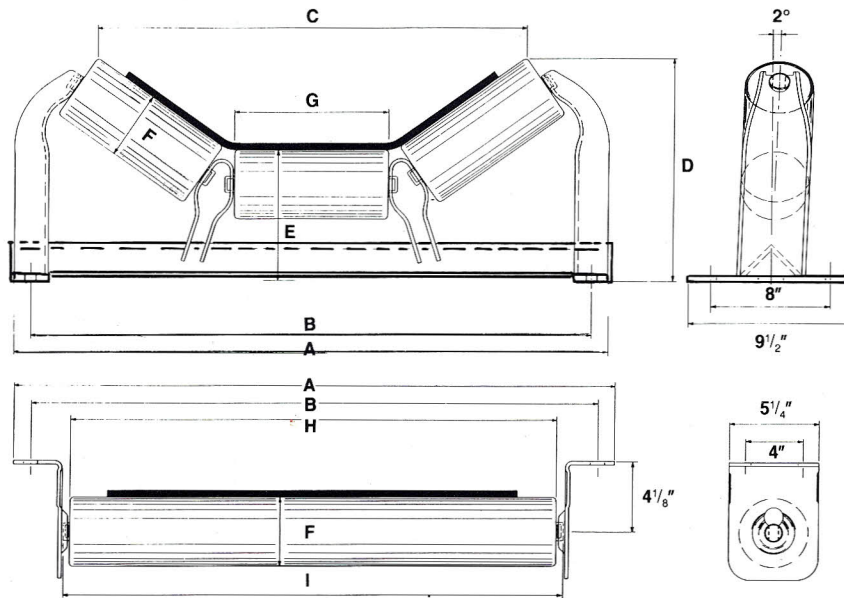


Series 25 5" Troughing Idlers & Return Rollers



20 DEG.

Belt Sizes	H.D.STYLE NO. AB-25-520S TROUGH ROLLERS AND AB-25-500S RETURN ROLLERS*										WT - LBS		
	A*	B*	C	D	E	F*	G	H*	I*	Roller	Carrier	Return	
18"	29"	27"	21 3/4"	10 1/2"	8"	5"	7"	22 1/4"	23 1/2"	11	53	24	
24"	35"	33"	27 1/4"	11 1/8"	8"	5"	8 7/8"	28 1/4"	29 1/2"	12	59	32	
30"	41"	39"	33"	11 7/8"	8"	5"	10 7/8"	34 1/4"	35 1/2"	14	70	37	
36"	47"	45"	39 1/8"	12 1/2"	8"	5"	13"	40 1/4"	41 1/2"	15	73	42	
42"	53"	51"	45 5/8"	13 3/4"	8 1/4"	5"	15 1/4"	46 1/4"	47 1/2"	18	85	48	
48"	59"	57"	51 5/8"	14 1/2"	8 3/8"	5"	17 3/8"	52 1/4"	53 1/2"	19	107	52	
54"	65"	63"	57 3/4"	15 1/2"	8 3/4"	5"	19 1/2"	58 1/4"	59 1/2"	21	124	56	
60"	71"	69"	64 1/8"	16 1/4"	8 3/4"	5"	21 5/8"	64 1/4"	65 1/2"	23	135	61	

35 DEG.

Belt Sizes	H.D.STYLE NO. AB-25-535S TROUGH ROLLERS AND AB-25-500S RETURN ROLLERS*										WT - LBS		
	A*	B*	C	D	E	F*	G	H*	I*	Roller	Carrier	Return	
18"	29"	27"	19 5/8"	12 1/8"	8"	5"	7"	22 1/4"	23 1/2"	11	53	24	
24"	35"	33"	24 5/8"	13 1/4"	8"	5"	8 7/8"	28 1/4"	29 1/2"	12	60	32	
30"	41"	39"	29 7/8"	14 3/8"	8"	5"	10 7/8"	34 1/4"	35 1/2"	14	71	37	
36"	47"	45"	35 1/2"	15 1/2"	8"	5"	13"	40 1/4"	41 1/2"	15	76	42	
42"	53"	51"	41 3/8"	17 1/8"	8 1/4"	5"	15 1/4"	46 1/4"	47 1/2"	18	88	48	
48"	59"	57"	47"	18 1/2"	8 3/8"	5"	17 3/8"	52 1/4"	53 1/2"	19	113	52	
54"	65"	63"	52 5/8"	20 1/8"	8 3/4"	5"	19 1/2"	58 1/4"	59 1/2"	21	128	56	
60"	71"	59"	58 1/4"	21 1/4"	8 3/4"	5"	21 5/8"	64 1/4"	65 1/2"	23	139	61	

* Return rollers available with lagging.
Rollers and frames sold separately if required.
All weights are approximate.
Mounting holes are 11/16" diameter.