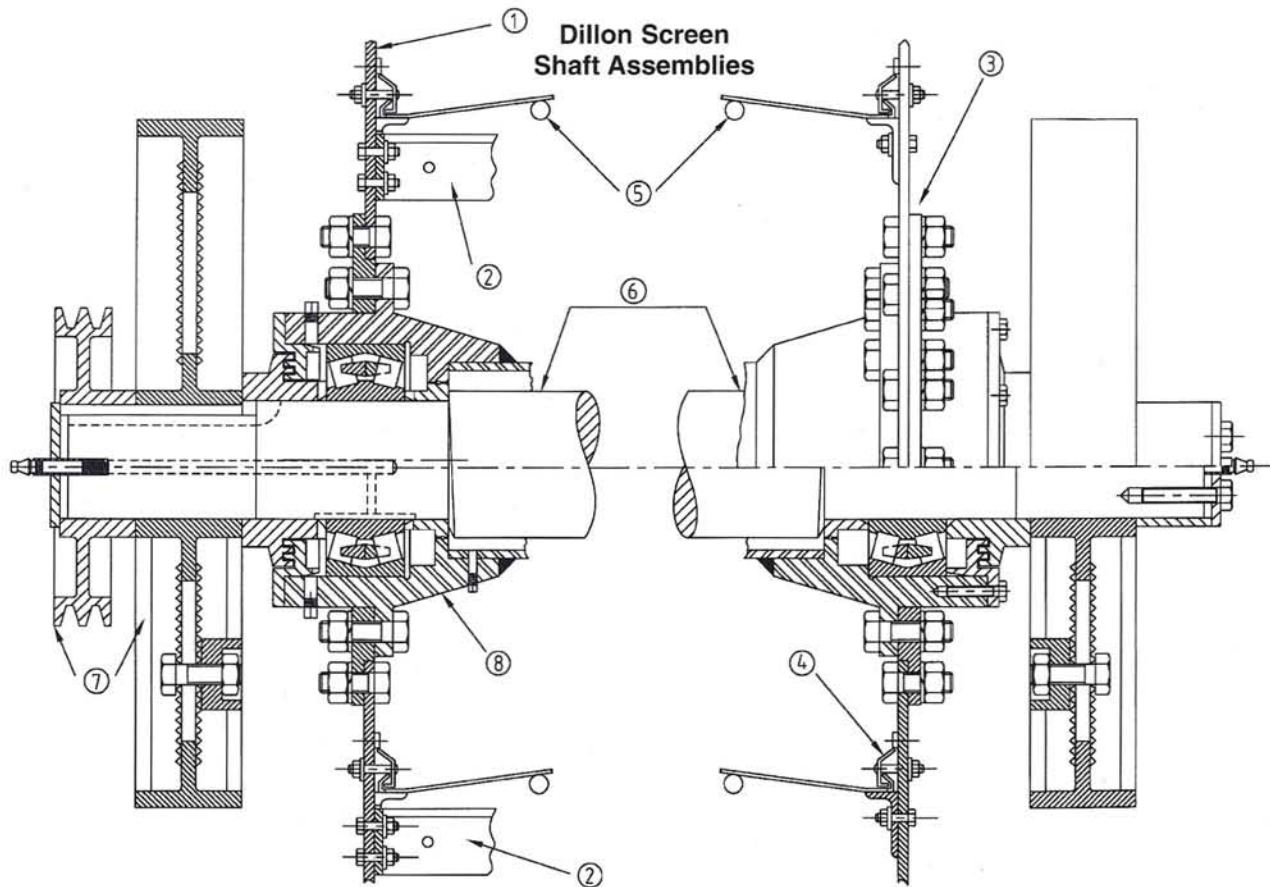


## CONSTRUCTION



**Drive mechanism assures positive and uniform vibration over the entire screening surface**

- 1** Heavy gauge side plates.
- 2** Deck cross members are securely bolted to side plates to accurately space and rigidly brace them.
- 3** All bolt holes in screen construction are drilled – not punched – to reduce stress concentration which causes weakening and possible failure.
- 4** Tensioning cloth draw plates, formed from heavy gauge material, give a smooth, taut screening surface and uniform tensioning.
- 5** Rubber-cushioned camber bars or pipes, arch the screen cloth to prevent whipping and undue vibration.
- 6** Demountable assembly may be completely removed from either side.
- 7** Drive sheave and balance wheels are concentric. Sheaves can be mounted on either end of shaft.
- 8** Only two heavy duty anti-friction bearings are required, since none of the screen load is carried on the shaft.